

INTERNATIONAL forest industries

2018 MEDIA PACK

INTERNATIONAL FOREST INDUSTRIES (IFI)

covers everything from silviculture through timber harvesting to forwarding and haulage to sawmills and pulp mills. We also give full coverage to sawmill activities from timber handling in woodyards and at the mill through to the cutting technology and the logistics

involved in carrying them to the customer for downstream processing. In addition, **IFI** covers biomass collection and processing. IFI fills a void within forest related industries that suppliers in timber harvesting, sawmill operations and biomass management have believed to exist for many years



Chris Cann
EDITOR



INTERNATIONAL LUMBER PROCESSING, LOGGING & BIOMASS

GLOBAL BRANDS EXPECT GLOBAL COVERAGE

Top flight companies who have recognised the value of advertising in IFI, include:

Tigercat



EcoLog
Faculty of Technology

CATERPILLAR
TODAY'S WORK. TOMORROW'S WORLD™



Pirotek

SPRINGER
THE WOOD-HEAVY MOWING COMPANY

EWD
The Saw Line Company

BRUKS



COMACT

LOGSET

JoeScan

Alog Max



FECON

PONSSE

PRIME
TECH

MORBARK

Bracke
FOREST

Doppstadt

Wood-Mizer
International



Precigrader



KOMATSU

LINEK



ROTTNE
TRAILER SYSTEMS

SAWCO

GILBERT

KOMPTECH



waratah
BUILT TO WORK

TEREX
Environmental Equipment

Söderhamn
Eriksson

USNR

HewSaw

pezzolato

Cranab

BABAC
TRACTION PRODUCTS

NORWOOD



AriVislanda

HOLTEC



CLARK TRACKS
High performance for maximum work life

CARGOTEC

EPSILON PALFINGER



PROLENC

LMI
technologies

RAYCO



Heizmat

RWF BRON

Söderhamn
Eriksson

TEREX
Environmental Equipment

Indexator

PRECISION
PULVERISER SYSTEMS

LIMAB

BELL

CASE
CONSTRUCTION

Envergent
A Harvest Company

OFA

ANDRITZ



Lumber Processing

SAWMILLING



ENGINEERED WOOD PRODUCTS



Logging



Biomass



Lumber Processing

SAWMILLING

Special Features -

Sawlines:

The complete sawline sits at the heart of the sawmill and provides a home for a multitude of technologies that combine to make sure that heart beats consistently and rhythmically. IFI speaks to companies delivering complete sawlines into businesses across the world to see who is drumming up the most business and what the market is demanding.



Wood Drying Technology:

From double-track, single-track and side-loading configurations, the sawmill's work isn't done until the icing is put on the cake. For the lumber processing industry, icing the cake involved drying and finishing the sawn-wood products properly, dressing them up for market. The feature will look at not only the latest in kiln technology and the issues facing kiln manufacturers, but the supporting components that keep modern kilns at the cutting edge, such as moisture measurement systems, kiln humidification systems, and thermal modification and vacuum drying.



ENGINEERED WOOD PRODUCTS WOOD BASED PANELS

IFI now covers all the latest news from around the world relying on a defined database of professionals in the panel manufacturing industries.

Manufacturers are currently supplying us with in depth reports on their latest technologies and new installations:

- Plywood
- Laminated veneer lumber
- Glued laminated timber
- Cross laminated timber
- Oriented strand board
- Particleboard and fibre composites

EWPs including glued laminated timber, finger joints, plywood, and stressed skin panels, have been in existence for at least 40 years.

Recently, there have been significant developments in the range of EWPs for structural applications with materials such as laminated veneer lumber (LVL), parallel strand lumber (PSL), laminated strand lumber (LSL), prefabricated I-beams, metal web joists and 'massive' or cross-laminated timber (CLT) becoming more widely available.

Special Features -

- Plywood
- Plywood Plants



Logging & Biomass

Biomass Special:

The biomass sector is no longer a burgeoning sub-sector to the forest industries but is now an established part of the sustainable energy mix. IFI looks at the technologies working hard to turn what may have been once considered low-value wood or even waste into green fuels. We're talking chippers, biomass energy systems and biomass storage units primarily, along with any other product that contributes to the biomass energy solution.



Felling Heads:

IFI tracks down the manufacturers of felling heads, the attachments that make tree length harvesting possible. We'll see what's new and what's changing at the forefront of tree length logging



Industry Voice:

Our annual call out to the industries' foremost suppliers to gather together their thoughts on forest industries today. What are the big issues; in which direction are forest industries headed; what is the next technology innovation that will change our business?



Extra copies distributed at:



Thursday, February 22nd
to Saturday, February 24th, 2018

Editorial Deadline

5th December 2017

Advertising Deadline

12th December 2017

Lumber Processing

SAWMILLING

Special Features -

Planers:

Planers are a key component of modern sawlines and have evolved in terms of speed, accuracy and efficiency to help sawyers increase the productivity of their operations. In our first focused feature on this vital equipment sub-sector, we'll look at which companies are developing operation-transforming improvements to their offerings.



Sawing Technology:

Knives, blades and sawing machines – the hardware at the foundations of the sawmilling sector. The review will include saw maintenance.



ENGINEERED WOOD PRODUCTS WOOD BASED PANELS

IFI now covers all the latest news from around the world relying on a defined database of professionals in the panel manufacturing industries. Manufacturers are currently supplying us with in depth reports on their latest technologies and new installations:

Plywood
Laminated veneer lumber
Glued laminated timber
Cross laminated timber
Oriented strand board
Particleboard and fibre composites

EWPs including glued laminated timber, finger joints, plywood, and stressed skin panels, have been in existence for at least 40 years. Recently, there have been significant developments in the range of EWPs for structural applications with materials such as laminated veneer lumber (LVL), parallel strand lumber (PSL), laminated strand lumber (LSL), prefabricated I-beams, metal web joists and 'massive' or cross-laminated timber (CLT) becoming more widely available.

Special Features -

LVL Plants & Technologies



Logging & Biomass

Special Features -

Harvesters:

Harvesters are constantly upgraded to improve speed, efficiency, comfort and safety. We look at the specific modifications and breakthroughs that suppliers are working on to improve the logging business.

Lifting & Loading:

Moving logs around the woodyard and onto the sawline requires a combination of forklift vehicles and crane-grapple combinations to efficient delivery. Equally in the forest there is an art to successfully loading logs onto a truck or indeed into a chipper. We're talking forklifts, cranes and grapples.

Access to the Timber Stand:

The machines that make making forest roads easy. A primary focus is afforded to dozers, while taking in all other technologies that contribute to this crucial process.

Mechanised timber harvesting on steep slopes:

The days when only loggers with chainsaws could take to the slopes to fell high-value timber are in decline. This is not only a good thing for the well-being of those lumberjacks risking their lives in this dangerous practice but also for the suppliers of mechanised forestry equipment, which have come to the rescue with far safer and ultimately more efficient machines for steep-slope harvesting. IFI report from DEMO International 2016 Maple Ridge Canada which featured heavily on Steep Slope Logging.



Extra copies distributed at:



Expoforest 2018
Santa Rita do Passa Quatro
São Paulo State

APRIL 11 - 13

Engines, Control Systems & Simulators:

The power behind forestry machines; the high-end systems that power the forest machine and deliver the messages from the sawmill – from engines to interfaces; and the high-tech simulators that make training easier and safer.



Editorial Deadline	26th January 2018
Advertising Deadline	31st January 2018

Lumber Processing

SAWMILLING

Special Features -

Scanning & Optimisation:

The technology at the pointy end of the sawmilling sector. Scanning and optimisation technology is being increasingly turned to by sawmillers to streamline operations and cut down on costs. It is also a sector that is constantly coming up with new ideas to help the sawmilling industry achieve its goals. We'll review not only technology breakthroughs and innovations but also look at case studies where these technologies have transformed the fortunes of sawmills.



Wood Drying Technology:

From double-track, single-track and side-loading configurations, the sawmill's work isn't done until the icing is put on the cake. For the lumber processing industry, icing the cake involved drying and finishing the sawn-wood products properly, dressing them up for market. The feature will look at not only the latest in kiln technology and the issues facing kiln manufacturers, but the supporting components that keep modern kilns at the cutting edge, such as moisture measurement systems, kiln humidification systems, and thermal modification and vacuum drying.

Debarkers:

How have the industry's found avenues to improve the way we debark logs – faster, cleaner, more efficient? Further advancements are possible and we'll chat with the people pushing the boundaries. We also look back to the forest to consider how debarking in the stand is changing to add value to logs before they leave the site.

ENGINEERED WOOD PRODUCTS WOOD BASED PANELS

IFI now covers all the latest news from around the world relying on a defined database of professionals in the panel manufacturing industries. Manufacturers are currently supplying us with in depth reports on their latest technologies and new installations:

- Plywood
- Laminated veneer lumber
- Glued laminated timber
- Cross laminated timber
- Oriented strand board
- Particleboard and fibre composites

EWPs including glued laminated timber, finger joints, plywood, and stressed skin panels, have been in existence for at least 40 years.

Recently, there have been significant developments in the range of EWPs for structural applications with materials such as laminated veneer lumber (LVL), parallel strand lumber (PSL), laminated strand lumber (LSL), prefabricated I-beams, metal web joists and 'massive' or cross-laminated timber (CLT) becoming more widely available.

Special Features -

OSB Plants & Technologies

Logging & Biomass

Special Features -

Chippers:

The emerging forestry subsector of chipping continues to take hold, keeping pace with one of its main drivers – biomass and bioenergy. The battle for market supremacy continues to intensify and the innovations continue to roll out.



Feller Bunchers:

The harvesting method pioneered in North America using the feller buncher has spread across the globe. The latest advances in these machines are covered in an annual technology review.

Drones:

Drones have become a key part of forest and fleet management. IFI talks to the makers of these cutting-edge tools about how forestry can be improved further through greater uptake.



Photo: Courtesy of Novadrone



Editorial Deadline

16th March 2018

Advertising Deadline

23th March 2018

Lumber Processing

SAWMILLING

Special Features -

Sawlines:

The complete sawline sits at the heart of the sawmill and provides a home for a multitude of technologies that combine to make sure that heart beats consistently and rhythmically. IFI speaks to companies delivering complete sawlines into businesses across the world to see who is drumming up the most business and what the market is demanding.

Mobile Sawmills:

Trees that must be felled are often left to rot or go for pulp. Instead take the full value from the wood ensuring the tree is used to its maximum potential. Expensive transport costs are avoided by taking mobile sawmills to the tree, and sawing it to best advantage..

Wood Drying Technology:

From double-track, single-track and side-loading configurations, the sawmill's work isn't done until the icing is put on the cake. For the lumber processing industry, icing the cake involved drying and finishing the sawn-wood products properly, dressing them up for market. The feature will look at not only the latest in kiln technology and the issues facing kiln manufacturers, but the supporting components that keep modern kilns at the cutting edge, such as moisture measurement systems, kiln humidification systems, and thermal modification and vacuum drying.



ENGINEERED WOOD PRODUCTS WOOD BASED PANELS

IFI now covers all the latest news from around the world relying on a defined database of professionals in the panel manufacturing industries.

Manufacturers are currently supplying us with in depth reports on their latest technologies and new installations:

- Plywood
- Laminated veneer lumber
- Glued laminated timber
- Cross laminated timber
- Oriented strand board
- Particleboard and fibre composites

EWPs including glued laminated timber, finger joints, plywood, and stressed skin panels, have been in existence for at least 40 years.

Recently, there have been significant developments in the range of EWPs for structural applications with materials such as laminated veneer lumber (LVL), parallel strand lumber (PSL), laminated strand lumber (LSL), prefabricated I-beams, metal web joists and 'massive' or cross-laminated timber (CLT) becoming more widely available.

Special Features -

PB Plants & Technologies



Extra copies distributed at:



Trä & Teknik, Göteborg, Sweden
Aug 28 - 31, 2018

Logging & Biomass

Special Features -

Forwarders:

The improved power and capacity of the forwarder has revolutionised the possibilities for cut-to-length harvesting operations. IFI tracks suppliers as they continue down that path.



Extra copies distributed at:



18. - 22. Jul. 2018 | Messe München

18 - 22 JULY 2018

Messe München

Trucks & Trailers:

Cutting down the timber and processing the lumber are the primary forest industries but the link in between is crucial for their smooth running. Wood transport uses the world's foremost truck manufacturers and speciality wood trailer and IFI reviews which ones are doing the best job.



Editorial Deadline

11th May 2018

Advertising Deadline

15th May 2018

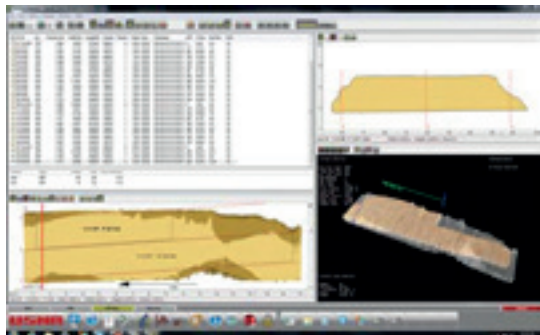
Lumber Processing

SAWMILLING

Special Features -

Scanning & Optimisation:

The technology at the pointy end of the sawmilling sector. Scanning and optimisation technology is being increasingly turned to by sawmillers to streamline operations and cut down on costs. It is also a sector that is constantly coming up with new ideas to help the sawmilling industry achieve its goals. We'll review not only technology breakthroughs and innovations but also look at case studies where these technologies have transformed the fortunes of sawmills.



Edgers:

The edger is a key component of the sawline, which relies heavily on its efficient and effective performance. IFI reviews the latest innovations in edgers that allow sawlines to become increasingly rapid.



Extra copies distributed at:



ENGINEERED WOOD PRODUCTS WOOD BASED PANELS

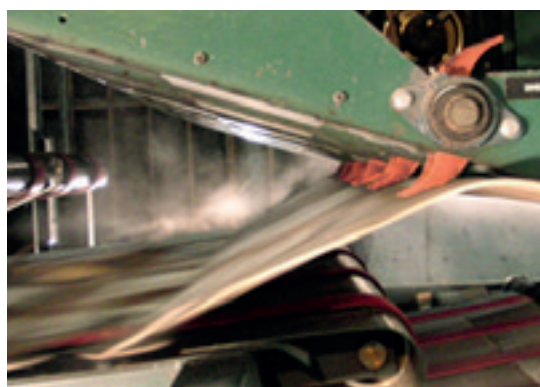
IFI now covers all the latest news from around the world relying on a defined database of professionals in the panel manufacturing industries. Manufacturers are currently supplying us with in depth reports on their latest technologies and new installations:

- Plywood
- Laminated veneer lumber
- Glued laminated timber
- Cross laminated timber
- Oriented strand board
- Particleboard and fibre composites

EWPs including glued laminated timber, finger joints, plywood, and stressed skin panels, have been in existence for at least 40 years. Recently, there have been significant developments in the range of EWPs for structural applications with materials such as laminated veneer lumber (LVL), parallel strand lumber (PSL), laminated strand lumber (LSL), prefabricated I-beams, metal web joists and 'massive' or cross-laminated timber (CLT) becoming more widely available.

Special Features -

CLT Plants & Technologies



Logging & Biomass

Special Features -

Skidders:

Going hand-in-hand with feller bunchers, the advancement of skidding machines is necessary for the progression of tree-length harvesting operations. We see what's being done to help loggers get more from their skidders.



Purpose-Built Forestry Machines – Processing and Loading:

Swing machines, shovel loggers and knuckleboom loaders are needed to meet modern processing and loading needs. Delimiting and processing can occur at the landing or the stump, while loading primarily consists of transferring the logs from a landing area to the truck.



Shredders & Grinders:

IFI takes an in-depth look at the high-speed grinders and low-speed shredders, considering the performance enhancing features on a variety of machines that can deliver the reliability and dependability contractors need to stay profitable.



Editorial Deadline	12th July 2018
Advertising Deadline	19th July 2018

Lumber Processing

SAWMILLING

Special Features -

Shifting & Sorting:

Transferring the variety of sawn-wood products through the sawmill and into the right holding unit at the other end must be both quick and precise. Sawmill suppliers have come up with a number of nifty solutions to ensure this task is done efficiently.



Trimmers:

We look at Trimmer systems capable of servicing the needs of Sawmills, Planing Mills, and Concentration lines at speeds of 180+ lpm.



ENGINEERED WOOD PRODUCTS WOOD BASED PANELS

IFI now covers all the latest news from around the world relying on a defined database of professionals in the panel manufacturing industries. Manufacturers are currently supplying us with in depth reports on their latest technologies and new installations:

Plywood
Laminated veneer lumber
Glued laminated timber
Cross laminated timber
Oriented strand board
Particleboard and fibre composites

EWPs including glued laminated timber, finger joints, plywood, and stressed skin panels, have been in existence for at least 40 years. Recently, there have been significant developments in the range of EWPs for structural applications with materials such as laminated veneer lumber (LVL), parallel strand lumber (PSL), laminated strand lumber (LSL), prefabricated I-beams, metal web joists and 'massive' or cross-laminated timber (CLT) becoming more widely available.

Special Features -

MDF Plants & Technologies

Extra copies distributed at:


**TIMBER PROCESSING
AND
ENERGY EXPO**

Portland, United States
Oct 17 - 19, 2018

Logging & Biomass

Special Features -

Tyres & Chains:

Tyre and chain manufactures are finding themselves in an increasingly competitive marketplace in the providing the foundations for harvesting contractors, as several leading companies are challenged by an emerging generation of speciality forestry suppliers.



Harvester Heads:

The machines that do the cutting to length in the cut-to-length system. Suppliers last year, much like the wider CTL sector, focused on thinning operations but we have seen this starting to change. IFI follows the trend back to volume processing and into new eucalyptus markets.



Prime Movers & Mulcher Attachments:

IFI publishes a technology review of forestry mulching attachments and purpose-built hydraulic or PTO driven prime movers. This feature will cover machines designed for right-of-way, vegetation management, low impact seismic mulching, firebreaks, land improvement and commercial land clearing applications.



Editorial Deadline	14th September 2018
Advertising Deadline	21st September 2018

Lumber Processing

SAWMILLING

Special Features -

Sawlines:

The complete sawline sits at the heart of the sawmill and provides a home for a multitude of technologies that combine to make sure that heart beats consistently and rhythmically. IFI speaks to companies delivering complete sawlines into businesses across the world to see who is drumming up the most business and what the market is demanding.



Wood Drying Technology:

From double-track, single-track and side-loading configurations, the sawmill's work isn't done until the icing is put on the cake. For the lumber processing industry, icing the cake involved drying and finishing the sawn-wood products properly, dressing them up for market. The feature will look at not only the latest in kiln technology and the issues facing kiln manufacturers, but the supporting components that keep modern kilns at the cutting edge, such as moisture measurement systems, kiln humidification systems, and thermal modification and vacuum drying.



ENGINEERED WOOD PRODUCTS WOOD BASED PANELS

IFI now covers all the latest news from around the world relying on a defined database of professionals in the panel manufacturing industries. Manufacturers are currently supplying us with in depth reports on their latest technologies and new installations:

- Plywood
- Laminated veneer lumber
- Glued laminated timber
- Cross laminated timber
- Oriented strand board
- Particleboard and fibre composites

EWPs including glued laminated timber, finger joints, plywood, and stressed skin panels, have been in existence for at least 40 years.

Recently, there have been significant developments in the range of EWPs for structural applications with materials such as laminated veneer lumber (LVL), parallel strand lumber (PSL), laminated strand lumber (LSL), prefabricated I-beams, metal web joists and 'massive' or cross-laminated timber (CLT) becoming more widely available.

Special Features -

- Plywood
- Plywood Plants



Logging & Biomass

Biomass Special:

The biomass sector is no longer a burgeoning sub-sector to the forest industries but is now an established part of the sustainable energy mix. IFI looks at the technologies working hard to turn what may have been once considered low-value wood or even waste into green fuels. We're talking chippers, biomass energy systems and biomass storage units primarily, along with any other product that contributes to the biomass energy solution.



Felling Heads:

IFI tracks down the manufacturers of felling heads, the attachments that make tree length harvesting possible. We'll see what's new and what's changing at the forefront of tree length logging



Industry Voice:

Our annual call out to the industries' foremost suppliers to gather together their thoughts on forest industries today. What are the big issues; in which direction are forest industries headed; what is the next technology innovation that will change our business?



Engines, Control Systems & Simulators:

The power behind forestry machines; the high-end systems that power the forest machine and deliver the messages from the sawmill – from engines to interfaces; and the high-tech simulators that make training easier and safer.



Editorial Deadline

4th December 2018

Advertising Deadline

7th December 2018

MECHANICAL DETAILS

All measurements are Height x Width

Double Page Spread

BLEED 307mm x 430mm
(12 1/8 x 16 7/8 inches)
TRIM 297mm x 420mm
11 3/4 x 16 1/2 inches



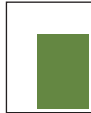
Single Page

BLEED 307mm x 220mm
(12 1/8 x 8 5/8 inches)
TRIM 297mm x 210mm
(11 3/4 x 8 1/4 inches)



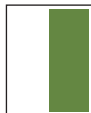
Half Island

TYPE 187mm x 125mm
(7 3/8 x 4 15/16 inches)



Half Vertical

BLEED 307mm x 108mm
(12 1/8 x 4 1/8 inches)
TRIM 297mm x 103mm
(11 3/4 x 4 inches)
TYPE 270mm x 90mm
(10 5/8 x 3 9/16 inches)



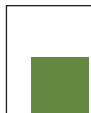
Half Horizontal

BLEED 142mm x 220mm
(5 1/2 x 8 5/8 inches)
TRIM 138mm x 210mm
(5 3/8 x 8 1/4 inches)
TYPE 124mm x 190mm
(4 7/8 x 7 1/2 inches)



Third Island

TYPE 124mm x 125mm
(4 7/8 x 4 15/16 inches)



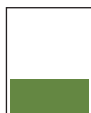
Third Vertical

TYPE 270mm x 60mm
(10 5/8 x 2 3/8 inches)



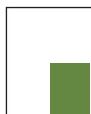
Third Horizontal

TYPE 80mm x 190mm
(3 1/8 x 7 1/2 inches)



Quarter Vertical

TYPE 124mm x 90mm
(4 7/8 x 3 9/16 inches)



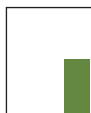
Quarter Horizontal

TYPE 57mm x 190mm
(2 1/4 x 7 1/2 inches)



Sixth Column

TYPE 124mm x 60mm
(4 7/8 x 2 3/8 inches)



Sixth Horizontal

TYPE 38mm x 190mm
(1 1/2 x 7 1/2 inches)



Print Areas

Height x Width

Bleed Plate	307mm x 220mm (12 1/8 x 8 5/8 inches)
Trim size	297mm x 210mm (11 3/4 x 8 1/4 inches)
Type area (page)	270mm x 190mm (10 5/8 x 7 1/2 inches)

MECHANICAL REQUIREMENTS

Advertising material should be sent by e-mail to emma@internationalforestindustries.com Large files (10Mb or more) can be compressed using Zip, Stuffit, RAR or JPEG, or please ask for alternative methods of sending.

Alternatively, material can be sent by courier or post on a CD, DVD or memory stick to the address below.

File naming convention: Company name_month, i.e. YourCompanyName_September

Print-ready file format: High resolution 300 dpi CMYK PDF (Press Optimised). Acrobat 5 (PDF 1.4) compatible (or newer). Please do not embed colour profiles as they may clash with our printing profile.

- **All images must be high resolution** – 300 dpi (at final size), CMYK or greyscale.
- **All fonts must be embedded.**
- **Colours must be converted to CMYK.** The use of RGB and pantone colours can NOT be accepted, apart from Pantone Spot colours which are accepted at an extra charge. Please do not embed colour profiles as they may clash with our printing profile.
- **Crop marks** should be added where necessary.
- **Bleed** – plus 5 mm on all 4 edges.
- Layers must be flattened before saving as a PDF file.

Other file formats accepted: Adobe Photoshop Type must be separate and not form part of the picture, also it must be 100% Black and not made up from CMYK. (save as 300 dpi, .tif, .eps or .jpeg).

Adobe Illustrator (save as .eps – ensuring all fonts are saved as outlines).

QuarkXpress and InDesign – by arrangement with our production department.

We cannot accept: Microsoft Word, Excel or Powerpoint files. These programmes resize the pages and cannot separate colours to CMYK.

Production Contact

Emma Smith, International Forest Industries, Team Publishing Ltd, 2 Claridge Court, Lower Kings Road, Berkhamsted, Hertfordshire, England HP4 2AF.

Tel: +44 (0) 1442 877 583 Fax: +44 (0) 1442 870 617

E-mail: emma@internationalforestindustries.com

Website: www.internationalforestindustries.com

ADVERTISING MATERIAL DEADLINE

International Forest Industries is despatched on the first day of the month of publication. Bookings and all necessary advertising material are required by last day of the month preceeding publication.

AGENCY COMMISSION

A commission of 15% (10% in the UK) is payable on space, colour and positional charges, where applicable. Accounts payable within 30 days of invoice. No cash discount.

REPRINTS

All of the feature articles in International Forest Industries are available as reprints at competitive rates. Samples and quotes on request.

INSERTS

Loose and bound-in inserts are accepted in International Forest Industries subject to approval on size and content. Charges and printing rates are available on request.

CONTRACT PUBLISHING SERVICES

We can also offer extensive market research services, corporate profile/ advertorial features as well as having the facilities to write, design and print company supplements/brochures/house journals.

Further information and quotations on request.

RATES & DATA

ADVERT SIZE	£	€	US\$
4 COLOUR			
DPS	5,250	7,085	9,710
Full-Page	2,900	3,915	5,365
1/2-Page	1,550	2,090	2,870
1/3-Page	990	1,335	1,830
1/4-Page	810	1,095	1,495
1/6-Page	510	690	945
BLACK & WHITE			
Full-Page	2,040	2,755	3,775
1/2-Page	1,080	1,455	1,995
1/3-Page	690	930	1,275
1/4-Page	570	770	1,055
1/6-Page	370	500	685
SPECIAL POSITIONS			
Front Cover	3,600	4,860	6,660
Inside Front Cover	3,200	4,320	5,920
Outside Back Cover	3,400	4,595	6,290
Inside Back Cover	3,200	4,320	5,920
CLASSIFIED ADVERTS			
Contact: emma@internationalforestindustries.com			
Standard Entry	300	405	555
(Height 40 mm x Width 55 mm) x 6 insertions (2 x 2½ inches)	200	270	370
Double Entry	500	675	925
(Height 80 mm x Width 55mm) x 6 insertions (4 x 2½ inches)	400	540	740

**International Forest Industries
Website Banner Advertising**
Per month costing £120/€130/US\$190
Size: Width 468 x Height 60 pixels

Series Discount:
3-5 Insertions 10%
6-11 Insertions 15%
12+ Insertions 25%

ADVERTISING DEADLINE:

International Forest Industries is despatched on the first day of the month of publication. Bookings and all necessary advertising material are required 2 weeks prior to publication date if advertisement proofs are required for approval.

HIGH PROFILE

High profile: International forest industries have some colourful characters who have plenty of stories to tell. *IFI* editor Chris Cann goes one-on-one with some of the industry heavyweights to pick their brains on a wide range of topics. Featured in 2012/13:



Anders Ragnarsson
Continental Biomass Industries President



Tall timber

Anders Ragnarsson is a Swedish-born forester who won't settle for second best. He spoke with editor Chris Cann following World Bioenergy 2012 about climbing giant trees in the snow, the problems with the green energy movement and riding his Harley Davidson through the Italian Alps.



Esa Rantala
Logset Managing Director



Friends in need

International Forest Industries Editor, Chris Cann, caught up with recently installed Logset Managing Director, Esa Rantala, at the KWF exhibition in Germany over the summer to discuss the company's emergence from the financial crisis as a true technology leader.



Jarmo Vidgrén
Ponsse Sales and Marketing Director



Keeping it in the family

Editor Chris Cann stole a few minutes with Ponsse's very busy Sales and Marketing Director, Jarmo Vidgrén, at KWF earlier this year to find out what it was like to take on the family business during the economic crisis; which CTL markets worldwide are currently most important; and why he doesn't like Russian airports.



Larry Cumming
Peterson Corporation President



Beating the drum

Peterson Pacific President Larry Cumming took an early morning call from Editor Chris Cann to discuss the shift in forestry technology over the past 40 years and why the US continues to trail Europe in the use of biomass fuels.



Ashlyne Dale
Norwood Sawmills President



Forestry's First Lady

Former lawyer and current Norwood Sawmills President Ashlyne Dale sits at the head of a truly international success story for the forestry sector. She tells Editor Chris Cann how she's used her skills from her previous career to build Norwood into the company it is today; why forestry professionals are more enlightened than lawyers and judges; and why she never takes a day off work.



Rolf Andersson
Rottne Managing Director



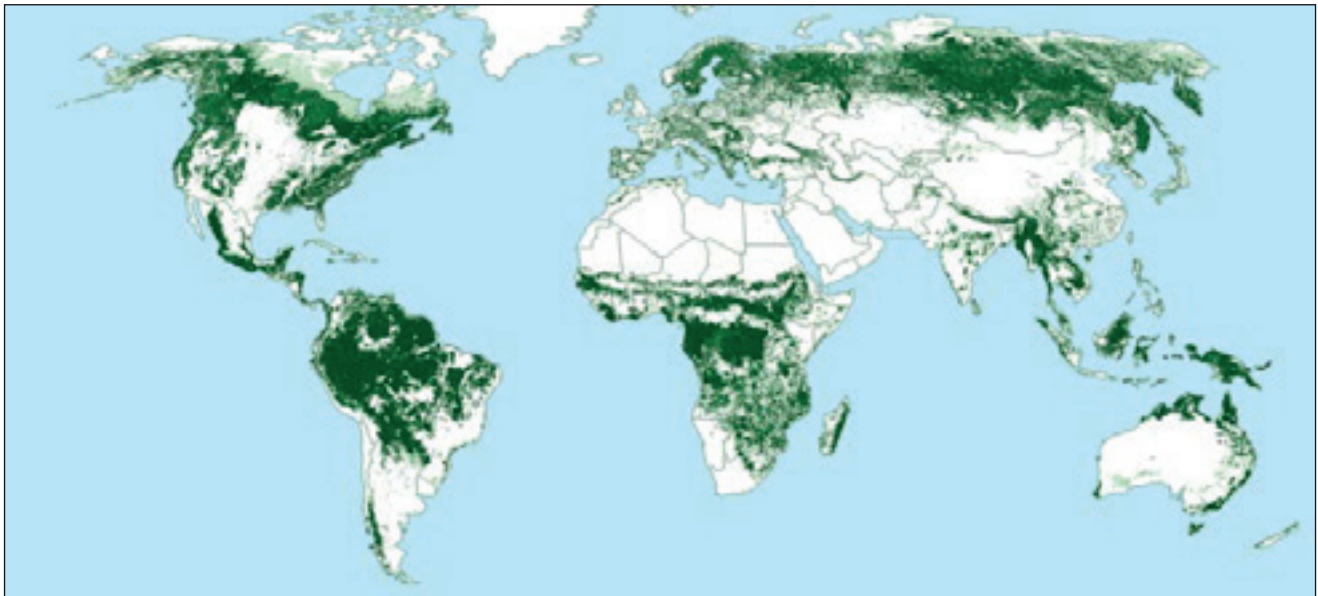
Making a Difference

International Forest Industries Editor Chris Cann shared a bench on the Rottne stand at Elmia with Managing Director Rolf Andersson and discussed his life in the forestry, the emergence of Rottne as an international power, and the importance of a holiday.

IFI CIRCULATION BY CATEGORY	%
Logging Contractors	42%
Foresters/Forestry Consultants, TIMO's	8%
Sawmill Directors/Managers/Technical	33%
Government/State Procurement	3%
EWP's Directors / Plant Managers	5%
Biomass Contractors	9%
TOTAL	100%

GEOGRAPHICAL DISTRIBUTION	
Africa	164
Asia	134
Australasia	711
Europe & Scandinavia	3604
North America	7954
Russia & Baltics	240
South America	957
TOTAL	13,774

99 Countries Covered



ADVERTISING OFFICES

UK, Europe, South Africa, US East Coast

CONTACT: Phil Playle or David Lansdowne
Lansdowne Media Services Ltd
Tel: +44 (0)1442 877 777
Fax: +44 (0)1442 870 617
Email:
phil@internationalforestindustries.com
or david@internationalforestindustries.com

Japan

CONTACT: Shigeru Kobayashi
Japan Advertising Communications, Inc.
Star Bldg., 3-10-3 Kanda Jimbocho
Chiyoda-ku, Tokyo 101-0051
Tel: 81-3-3261-4591
Fax: 81-3-3261-6126
Email: Shig-kobi@media-jac.co.jp

Western USA (AZ, CA, NV, UT) Australia, & New Zealand

CONTACT: Bob Warren
Lansdowne Media Services Ltd
Tel: +44 (0)1442 877 777
Fax: +44 (0)1442 870 617
Email: bob@internationalforestindustries.com

Western USA (MT, ID, OR, WA) & Canada

CONTACT: Bob Warren
Lansdowne Media Services Ltd
Tel: +44 (0)1442 877 777
Fax: +44 (0)1442 870 617
Email: bob@internationalforestindustries.com

US Mid-West, Central & Mountain

CONTACT: Kevin Lapham
J.P.Media Inc
1163 E.Ogden Ave, Ste. 705-359 Naperville
IL 60563, USA
Tel: +1 (630) 420 9752
Fax: +1 (630) 420 9763
Email: lapham@jpmmediainc.com

South America

CONTACT: Ricardo Cortés
Editec S.A.
Avda del Cóndor 844 Of. 205,
Cuidad Empresarial -
Huechuraba, Santiago, Chile
Tel: +56 2 757 4200
Fax: +56 2 757 4201
Email: rcortes@editec.cl